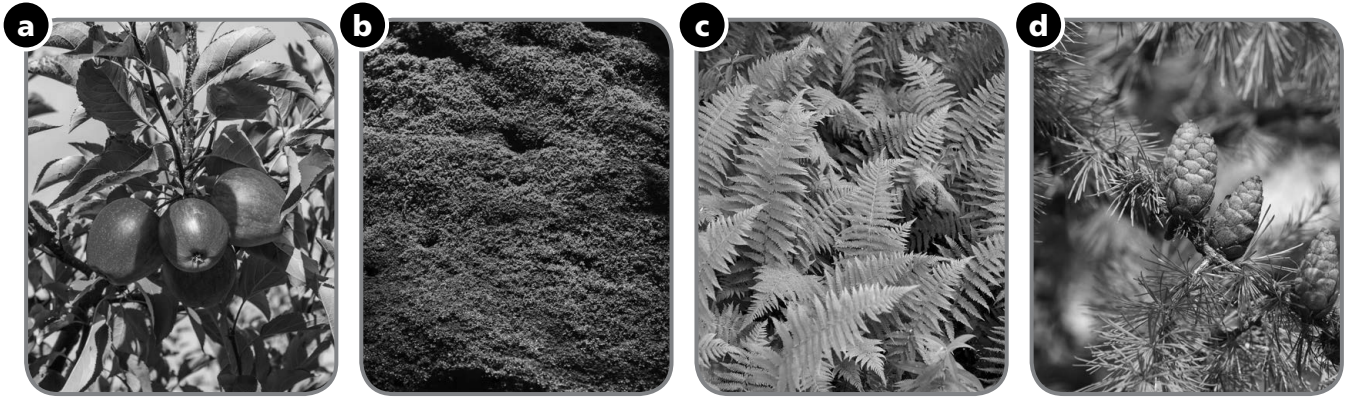


① Label the pictures *angiosperm*, *gymnosperm* or *non-flowering plant*.



② Circle *True* or *False*. Copy the sentences that are true and correct the ones that are false.

a. A gymnosperm's seeds develop inside a fruit.

True / False

A gymnosperm's seeds develop inside a cone.

b. Moss reproduces using seeds.

True / False

c. Wind pollination involves wind blowing pollen from one plant to another.

True / False

d. The flowers on an angiosperm attract arachnids.

True / False

e. Ferns reproduce using spores.

True / False

③ Order the stages of a plant's life cycle.

a. A seed develops inside the ovary.



b. The new plant produces flowers.



c. The seed germinates and a new plant grows.



d. The ovary takes the form of a fruit and the petals fall.



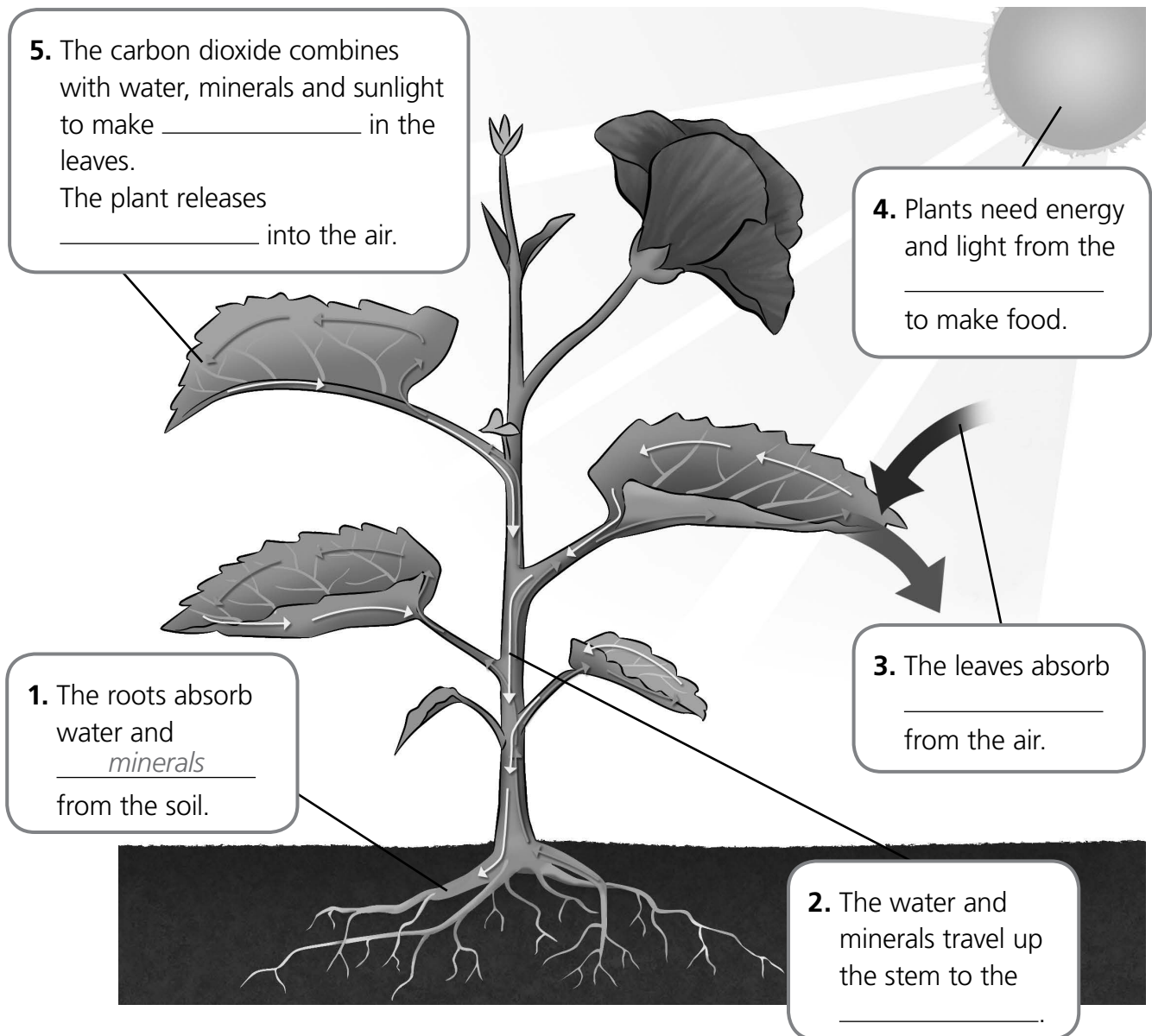
e. The fruit falls and opens.



f. Pollen lands on the stigma.



④ Complete the labels.

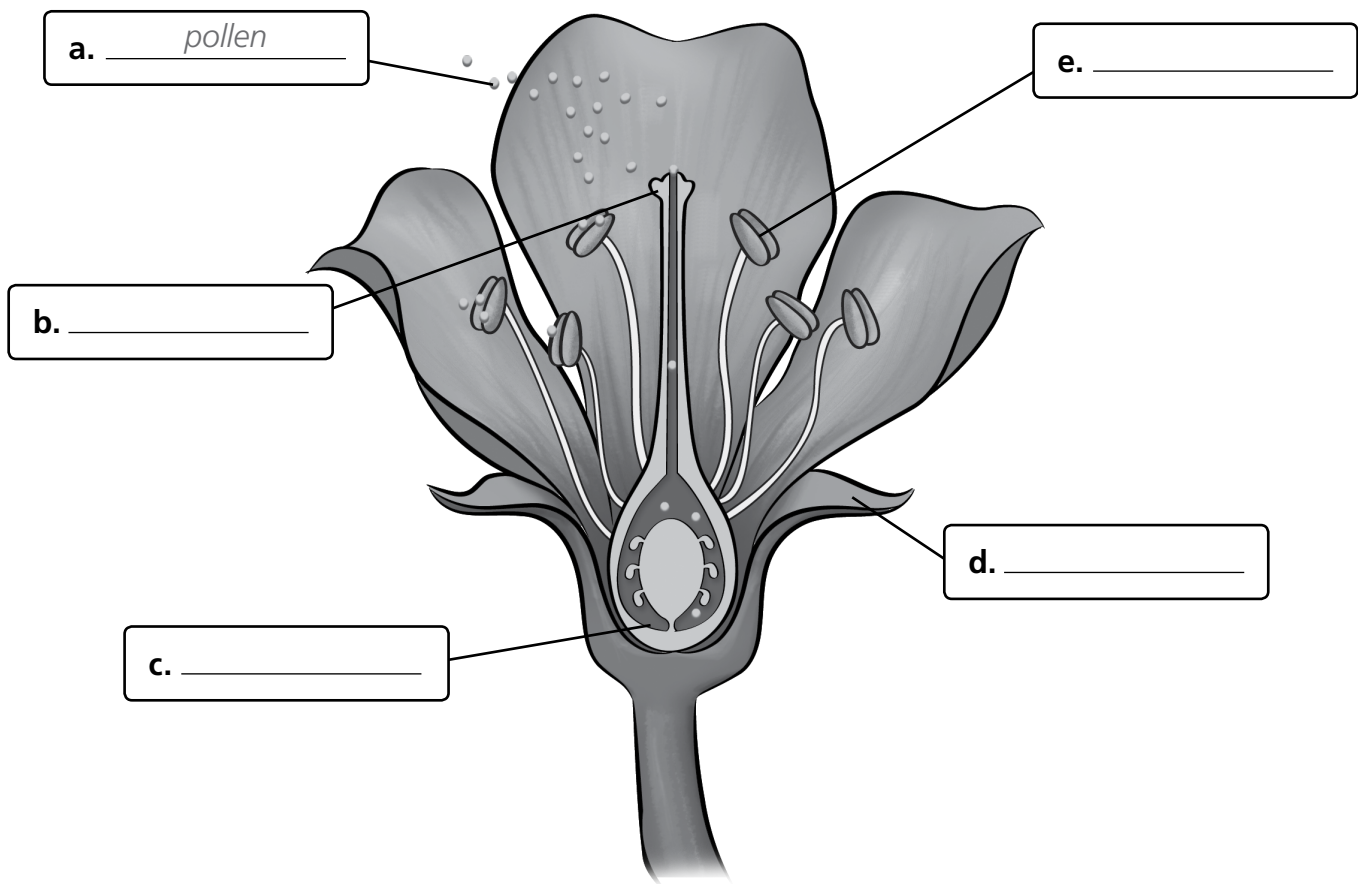


⑤ Circle the correct answers about plant nutrition.

- | | |
|---|---|
| a. How do plants get their energy? | <u>They make their own food</u> / They eat other plants |
| b. Where do they make their food? | In the stem / In the roots / In the leaves |
| c. What do we call this process? | Fertilisation / Photosynthesis / Pollination |
| d. What do plants absorb from the air? | Oxygen / Carbon dioxide / Minerals |
| e. What else do plants need for this process? | Sunlight / Darkness / Moisture |
| f. What do plants release into the air? | Oxygen / Carbon dioxide / Water |

⑥ Label the diagram.

stamen ~~pollen~~ stigma ovary sepal



⑦ What are these definitions describing?

- a. The stamen produces this.
- b. These have a soft stem. They are thin, flexible and usually short.
- c. These have a thick, hard stem and low branches.
- d. These have a thick, hard stem called a trunk.
- e. The seeds of a gymnosperm develop inside this.

Pollen

⑧ Use the words in the boxes to complete the definitions..

produce fruit and cones,

which produce spores

which contain seeds.

include mosses and ferns,

that they release into the air.

- a. Flowering plants _____.
- b. Non-flowering plants _____.